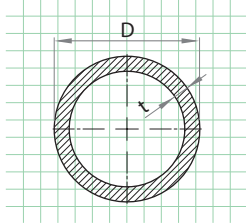
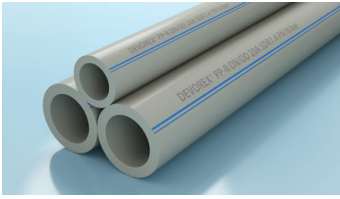


## ARCTIC-Y PIPE - COLD WATER - 3M

EN ISO 15874

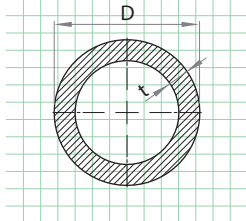
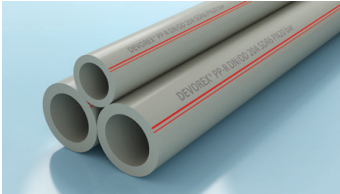


D mm	t mm	L mm
20	2.8	3000
25	3.5	3000
32	4.4	3000
40	5.5	3000

3800214064372	3800214069377	25	3020/190/64	
3800214064396	3800214069391	15	3020/190/64	
3800214064419	3800214069414	10	3020/190/64	
3800214064433	3800214069438	6	3020/190/64	

## ARCTIC-Y PIPE - HOT WATER - 3M

EN ISO 15874

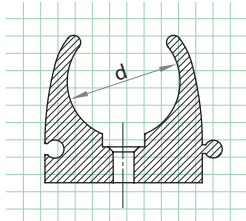


D mm	t mm	L mm
20	3.4	3000
25	4.2	3000
32	5.4	3000
40	6.7	3000

3800214064389	3800214069384	25	3020/190/64	
3800214064402	3800214069407	15	3020/190/64	
3800214064426	3800214069421	10	3020/190/64	
3800214064440	3800214069445	6	3020/190/64	

## ARCTIC-Y PIPE BRACKET

EN ISO 15874

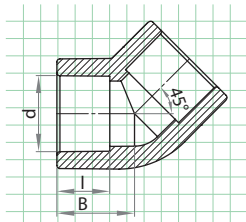
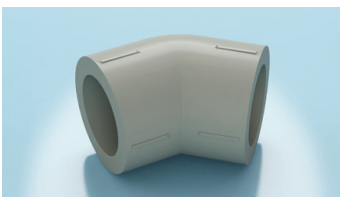


d mm
20
25
32
40

3800214064105	3800214069100	20	400	400/150/168
3800214064129	3800214069124	20	300	400/150/168
3800214064143	3800214069148	20	200	400/150/168
3800214064167	3800214069162	20	100	400/150/168

## ARCTIC-Y ELBOW 45°

EN ISO 15874

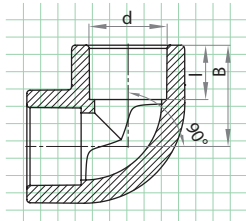
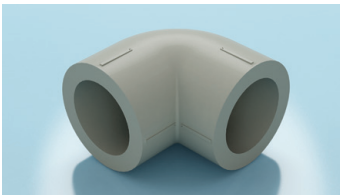


d mm	l mm	B mm	°
20	15	21.3	45°
25	17	25	45°
32	19	28.4	45°
40	22	33	45°

3800214063740	3800214068745	20	300	395/300/193
3800214063764	3800214068769	20	160	395/300/193
3800214063788	3800214068783	10	100	395/300/193
3800214063801	3800214068806	5	50	395/300/193

## ARCTIC-Y ELBOW 90°

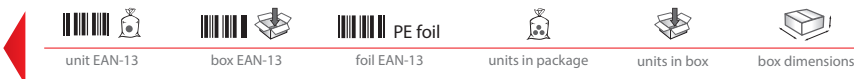
EN ISO 15874



d mm	l mm	B mm	°
20	15	26.5	90°
25	17	31.7	90°
32	19	36.7	90°
40	22	44	90°

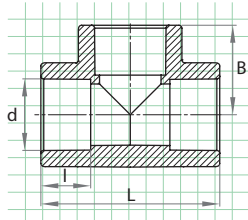
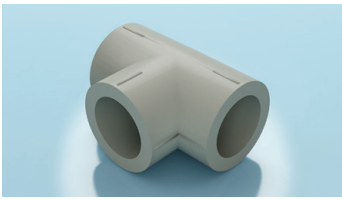
3800214063825	3800214068820	20	200	395/300/193
3800214063849	3800214068844	20	100	395/300/193
3800214063863	3800214068868	10	50	395/300/193
3800214063887	3800214068882	5	50	395/300/193

KEY



## ARCTIC-Y TEE

EN ISO 15874



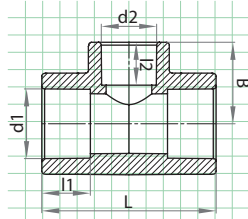
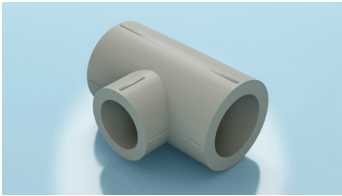
d mm	l mm	L mm	B mm
20	15	51	25.5
25	17	61	30.5
32	19	72	36
40	22	86	43



3800214064228	3800214069223	20	200	395/300/193
3800214064242	3800214069247	10	100	395/300/193
3800214064266	3800214069261	5	50	395/300/193
3800214064280	3800214069285	5	50	395/300/193

## ARCTIC-Y TEE REDUCED

EN ISO 15874



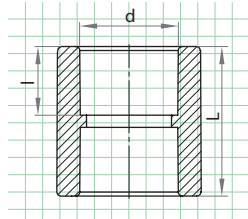
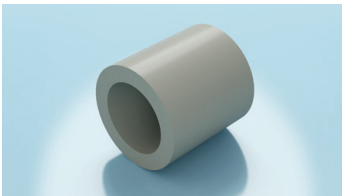
d1 mm	d2 mm	l1 mm	l2 mm	L mm	B mm
25	20	17	15	61	28.5
32	25	19	17	67	34
40	32	22	19	79	40



3800214064303	3800214069308	10	100	395/300/193
3800214064327	3800214069322	5	50	395/300/193
3800214064341	3800214069346	5	50	395/300/193

## ARCTIC-Y SOCKET

EN ISO 15874



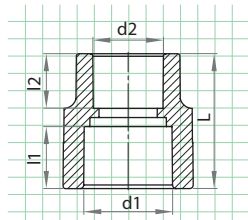
d mm	l mm	L mm
20	15	33
25	17	37
32	19	41
40	22	47



3800214063900	3800214068905	20	200	400/150/168
3800214063924	3800214068929	20	300	395/300/193
3800214063948	3800214068943	20	160	395/300/193
3800214063962	3800214068967	10	100	395/300/193

## ARCTIC-Y SOCKET REDUCTION

EN ISO 15874



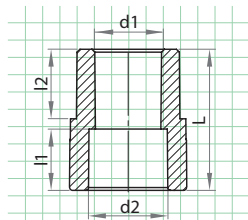
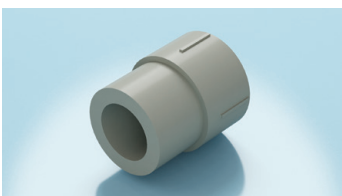
d1 mm	d2 mm	l1 mm	l2 mm	L mm
25	20	17	15	37
32	25	19	17	41
40	32	22	19	46



3800214064044	3800214069049	20	300	395/300/193
3800214064068	3800214069063	10	160	395/300/193
3800214064082	3800214069087	10	100	395/300/193

## ARCTIC-Y REDUCTION

EN ISO 15874



d1 mm	d2 mm	l1 mm	l2 mm	L mm
20	25	15	17	35
25	32	17	19	38.5
32	40	19	22	43.5



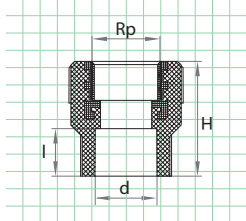
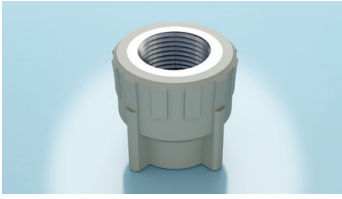
3800214063986	3800214068981	20	300	395/300/193
3800214064006	3800214069001	20	160	395/300/193
3800214064020	3800214069025	10	100	395/300/193

KEY



## ARCTIC-Y ADAPTOR F THREAD

EN ISO 15874

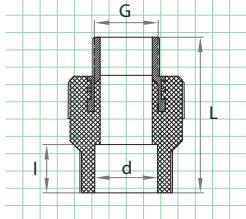
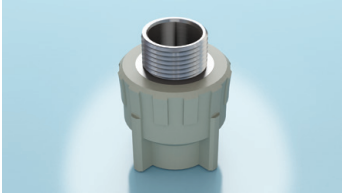


d mm	Rp mm	I mm	L mm
20	1/2"	17	41.5
20	3/4"	17	42.5
25	1/2"	17.8	42.5
25	3/4"	18.3	44.8
32	1"	20	54.8

Barcode	Unit Icon	Box Icon	Unit in Package	Units in Box	Box Dimensions
3800150906446	5	100	395/300/193		
3800150906453	5	100	395/300/193		
3800150906460	5	100	395/300/193		
3800150906477	5	100	395/300/193		
3800150906521	5	50	395/300/193		

## ARCTIC-Y ADAPTOR M THREAD

EN ISO 15874

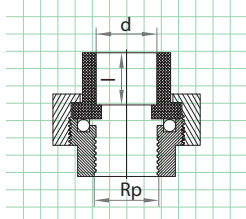
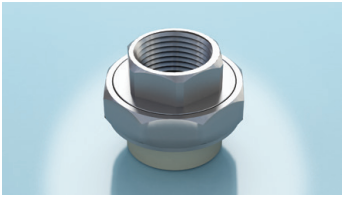


d mm	G mm	I mm	L mm
20	1/2"	17	55.5
20	3/4"	17	56.25
25	1/2"	17.8	59.5
25	3/4"	28.3	71.5
32	1"	20	71.5

Barcode	Unit Icon	Box Icon	Unit in Package	Units in Box	Box Dimensions
3800150906484	5	100	395/300/193		
3800150906491	5	100	395/300/193		
3800150906507	5	100	395/300/193		
3800150906514	5	100	395/300/193		
3800150906538	5	40	395/300/193		

## ARCTIC-Y UNION F THREAD

EN ISO 15874

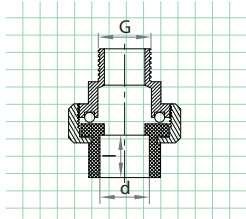
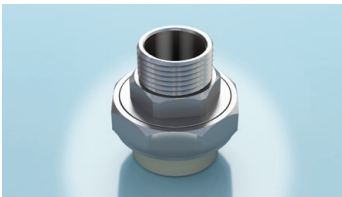


d mm	Rp mm	I mm
20	1/2"	15.8
25	3/4"	17.7
32	1"	19.8

Barcode	Unit Icon	Box Icon	Unit in Package	Units in Box	Box Dimensions
3800150906736	5	100	395/300/193		
3800150906743	5	80	395/300/193		
3800150906774	5	50	395/300/193		

## ARCTIC-Y UNION M THREAD

EN ISO 15874

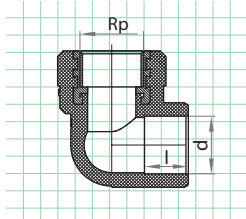
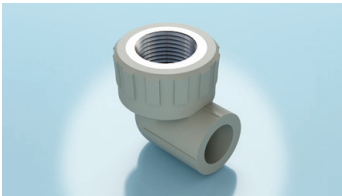


d mm	G mm	I mm
20	1/2"	15.8
25	3/4"	17.7
32	1"	19.8

Barcode	Unit Icon	Box Icon	Unit in Package	Units in Box	Box Dimensions
3800150906750	5	100	395/300/193		
3800150906767	5	80	395/300/193		
3800150906781	5	50	395/300/193		

## ARCTIC-Y ELBOW 90° F THREAD

EN ISO 15874



d mm	Rp mm	I mm
20	1/2"	16
20	3/4"	16.5
25	1/2"	19.5
25	3/4"	18.2
32	1"	20

Barcode	Unit Icon	Box Icon	Unit in Package	Units in Box	Box Dimensions
3800150906545	5	100	395/300/193		
3800150906552	5	100	395/300/193		
3800150906569	5	100	395/300/193		
3800150906576	5	50	395/300/193		
3800150906583	5	50	395/300/193		

KEY



unit EAN-13



box EAN-13



units in package



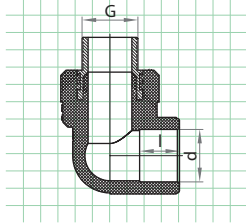
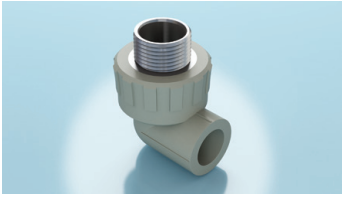
units in box



box dimensions

## ARCTIC-Y ELBOW 90° M THREAD

EN ISO 15874



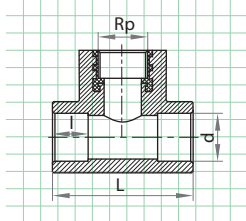
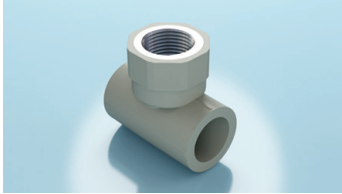
d mm	G mm	l mm
20	1/2"	16
20	3/4"	16.5
25	1/2"	19.5
25	3/4"	18.2
32	1"	20



3800150906590	3800150956595	5	100	395/300/193
3800150906606	3800150956601	5	100	395/300/193
3800150906613	3800150956618	5	50	395/300/193
3800150906620	3800150956625	5	50	395/300/193
3800150906637	3800150956632	5	50	395/300/193

## ARCTIC-Y TEE F THREAD

EN ISO 15874



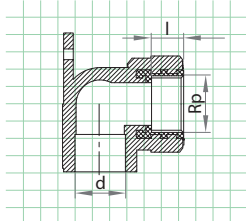
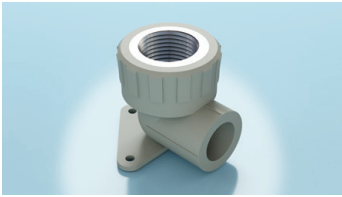
d mm	Rp mm	l mm	L mm
20	1/2"	14	56.5
25	3/4"	18	64



3800150906712	3800214064730	5	100	395/300/193
3800150906729	3800150956724	5	50	395/300/193

## ARCTIC-Y ELBOW FOR WALL F THREAD

EN ISO 15874



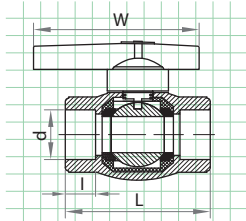
d mm	Rp mm	l mm
20	1/2"	15.8



3800150906644	3800150956649	5	100	395/300/193
---------------	---------------	---	-----	-------------

## ARCTIC-Y BALL VALVE

EN ISO 15874



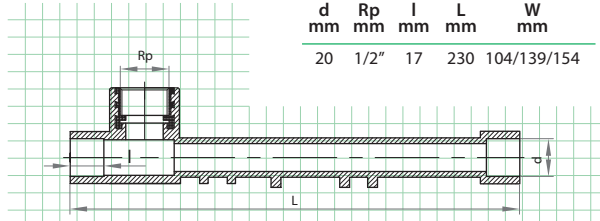
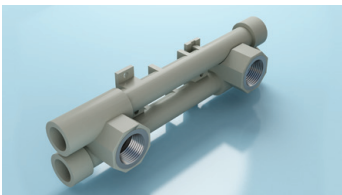
d mm	l mm	L mm	W mm
20	16.3	74.5	80
25	18.3	78	85
32	18.9	87.5	100



3800150906682	3800150956687	5	20	400/150/168
3800150906699	3800150956694	5	20	400/150/168
3800150906705	3800150956700	5	20	395/300/193

## ARCTIC-Y WALL MOUNTING GROUP

EN ISO 15874



d mm	Rp mm	l mm	L mm	W mm
20	1/2"	17	230	104/139/154



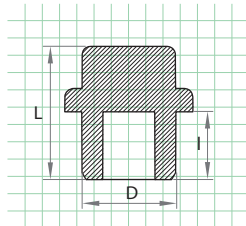
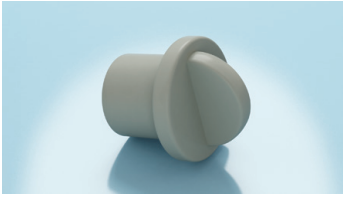
3800214064709	3800214069704	1	16	395/300/193
---------------	---------------	---	----	-------------

KEY



## ARCTIC-Y PLUG FOR WALL MOUNTING GROUP

EN ISO 15874

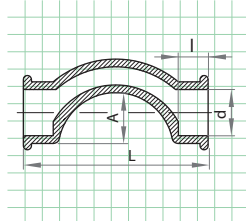


D mm	L mm	I mm
20	25	15

Barcode	Unit Icon	Barcode	Box Icon	Unit Icon	Box Icon	Dimensions
3800214064723	20	3800214069728	400	400/150/168		

## ARCTIC-Y BYPASS BEND WITH SOCKET

EN ISO 15874

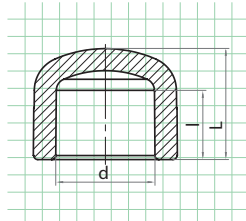
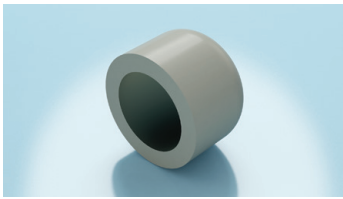


d mm	l mm	L mm	A mm
20	15.1	84	21.4
25	15.5	96	26.4
32	18.3	107.8	34.1

Barcode	Unit Icon	Barcode	Box Icon	Unit Icon	Box Icon	Dimensions
3800150906651	5	3800150956656	50	395/300/193		
3800150906668	5	3800150956663	40	395/300/193		
3800150906675	5	3800150956670	30	395/300/193		

## ARCTIC-Y END CAP

EN ISO 15874

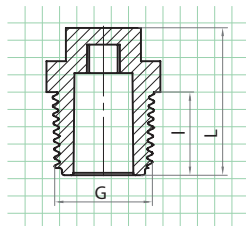
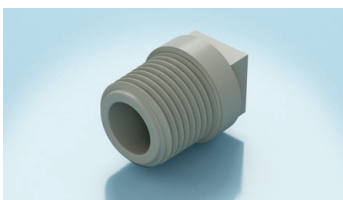


d mm	l mm	L mm
20	15	23
25	17	27
32	19	32
40	22	38.5

Barcode	Unit Icon	Barcode	Box Icon	Unit Icon	Box Icon	Dimensions
3800214063665	20	3800214068660	400	400/150/168		
3800214063689	20	3800214068684	400	395/300/193		
3800214063702	20	3800214068707	200	395/300/193		
3800214063726	10	3800214068721	100	395/300/193		

## ARCTIC-Y THREADED PLUG

EN ISO 15874



G mm	l mm	L mm
1/2"	17.5	31
3/4"	12	27

Barcode	Unit Icon	Barcode	Box Icon	Unit Icon	Box Icon	Dimensions
3800214064181	20	3800214069186	400	400/150/168		
3800214064204	20	3800214069209	400	395/300/193		

KEY

